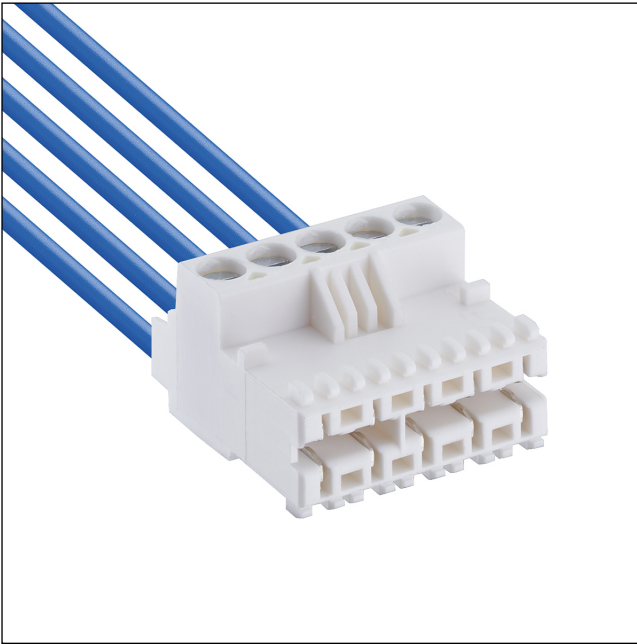


36

3614

RAST 5 connectors, pitch 5.0 mm



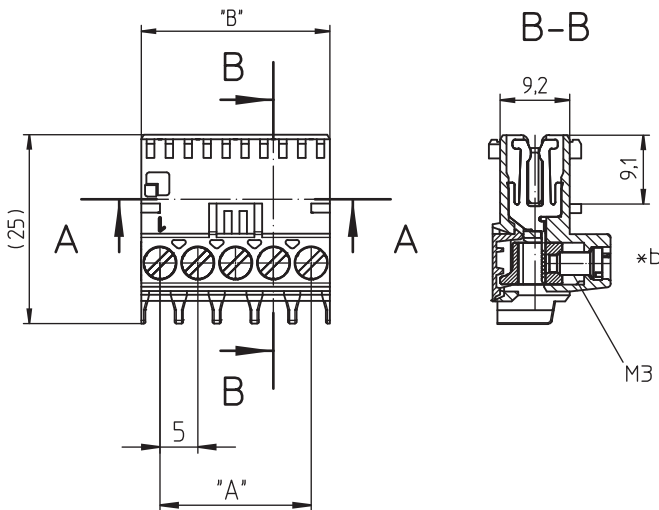
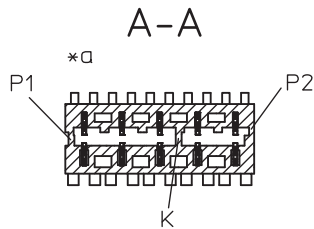
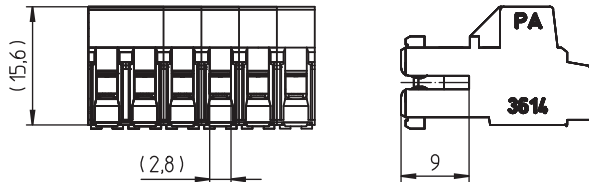
RAST 5 connector for direct mating, with screw terminal,
with lift clamp with protection against misplacing,
alternatively with or without keying rib and (shorter)
closed sides, consecutive placement without loss of pitch

Approvals:



36

3614



Environmental conditions

Temperature range -40 °C/+125 °C – 3614
-40 °C/+130 °C – 3614 M08¹


¹ upper limit temperature (insulating body) RTI (electrical) of the UL Yellow Card

Materials

Insulating body PA, V-2 according to UL94 – 3614
PA, V-2 according to UL94 – 3614 M08¹
Contact spring CuSn, tin-plated
Clamp CuZn, nickel-plated
Screw steel, zinc-plated and chromatiert

¹ M08: component glow wire resistant (GWT 750 °C), testing acc. to IEC 60695-2-11, assessment acc. to IEC 60335-1 (flame < 2 s)

Mechanical data

Mating with printed circuit board 1.5 ± 0.14 mm
Insertion force/contact ≤ 4,0 N
Withdrawal force/contact ≥ 1,0 N
Tightening torque screw 0,5 Nm
Keying proposals at www.lumberg.com 

Connectable conductors for screw clamp

Section stranded wire 0,14–2,5 mm² (AWG 26–14)
Section stranded wire with ferrule 0,25–2,5 mm² (AWG 24–14)
Section solid wire 0,14–4,0 mm² (AWG 26–12)
Stripping length 8 ± 1 mm

Electrical data (at T_{amb} 20 °C)

Contact resistance ≤ 5 mΩ
Rated current 6 A (T_{amb} 70 °C)
Rated voltage 300 V/250 V (VDE, cULus)
Material group I (IEC)/0 (UL) (CTI ≥ 600) – 3614
IIIa (IEC)/2 (UL) (CTI ≥ 250) – 3614 M08
Creepage distance 3,4 mm
Clearance 3,4 mm
Insulation resistance > 10 GΩ

36

3614

Designation	Pole Number	PU (Pieces)	MDQ (Pieces)	Dimensions		
				A (mm)	B (mm)	C (mm)
3614 02	2	400	2000	5	9.9	7.5
3614 03	3	400	2000	10	14.9	12.5
3614 04	4	200	1000	15	19.9	17.5
3614 05	5	200	1000	20	24.9	22.5
3614 06	6	200	1000	25	29.9	27.5

Designation to be completed by further details (e.g. for keying, color or material options).

Packaging:

in bulk, in a cardboard box